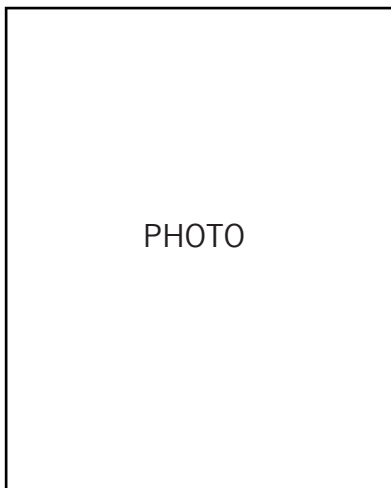


Anaphylaxis Emergency Plan: _____ (name)

This person has a potentially life-threatening allergy (anaphylaxis) to:



(Check the appropriate boxes.)

Food(s): _____

Insect stings Other: _____

Epinephrine Auto-Injector: Expiry Date: _____ / _____

Dosage:

EpiPen Jr® 0.15 mg EpiPen® 0.3 mg ALLERJECT® 0.15 mg ALLERJECT® 0.3 mg
 Emerade™ 0.3 mg Emerade™ 0.5 mg

Location of Auto-Injector(s): _____

Previous anaphylactic reaction: Person is at greater risk.

Asthmatic: Person is at greater risk. If person is having a reaction and has difficulty breathing, give epinephrine auto-injector before asthma medication.

A person having an anaphylactic reaction might have ANY of these signs and symptoms:

- **Skin system:** hives, swelling (face, lips, tongue), itching, warmth, redness
- **Respiratory system (breathing):** coughing, wheezing, shortness of breath, chest pain or tightness, throat tightness, hoarse voice, nasal congestion or hay fever-like symptoms (runny, itchy nose and watery eyes, sneezing), trouble swallowing
- **Gastrointestinal system (stomach):** nausea, pain or cramps, vomiting, diarrhea
- **Cardiovascular system (heart):** paler than normal skin colour/blue colour, weak pulse, passing out, dizziness or lightheadedness, shock
- **Other:** anxiety, sense of doom (the feeling that something bad is about to happen), headache, uterine cramps, metallic taste

Early recognition of symptoms and immediate treatment could save a person's life.

Act quickly. The first signs of a reaction can be mild, but symptoms can get worse very quickly.

1. **Give epinephrine auto-injector** (e.g. EpiPen®, ALLERJECT®, Emerade™) at the first sign of a known or suspected anaphylactic reaction. (See attached instructions.)
2. **Call 9-1-1** or local emergency medical services. Tell them someone is having a life-threatening allergic reaction.
3. **Give a second dose of epinephrine** as early as 5 minutes after the first dose if there is no improvement in symptoms.
4. **Go to the nearest hospital immediately (ideally by ambulance)**, even if symptoms are mild or have stopped. The reaction could worsen or come back, even after proper treatment. Stay in the hospital for an appropriate period of observation as decided by the emergency department physician (generally about 4-6 hours).
5. **Call emergency contact person (e.g. parent, guardian).**

Emergency Contact Information

Name	Relationship	Home Phone	Work Phone	Cell Phone

The undersigned patient, parent, or guardian authorizes any adult to administer epinephrine to the above-named person in the event of an anaphylactic reaction, as described above. This protocol has been recommended by the patient's physician.

Patient/Parent/Guardian Signature

Date

Physician Signature On file

Date

Blue to the sky. Orange to the thigh.

How to use EpiPen® and EpiPen Jr® (epinephrine) Auto-Injectors

Remove the EpiPen® Auto-Injector from the carrier tube and follow these 2 simple steps:



- Grasp with orange tip pointing downward
- Remove blue safety cap by pulling straight up – do not bend or twist



- Place the orange tip against the middle of the outer thigh
- Swing and push the auto-injector firmly into the thigh until it “clicks”
- Hold in place for 3 full seconds

Built-in needle protection

After injection, the orange cover automatically extends to ensure the needle is never exposed.

After using EpiPen®, you must seek immediate medical attention or go to the emergency room. For the next 48 hours, you must stay close to a healthcare facility or be able to call 911.

Visit EpiPen.ca.

EpiPen® and EpiPen Jr® (epinephrine) Auto-Injectors are indicated for the emergency treatment of anaphylactic reactions in patients who are determined to be at increased risk for anaphylaxis, including individuals with a history of anaphylactic reactions. Selection of the appropriate dosage strength is determined according to patient body weight.

EpiPen® and EpiPen Jr® Auto-Injectors are designed as emergency supportive therapy only. They are not a replacement for subsequent medical or hospital care. After administration, patients should seek medical attention immediately or go to the emergency room. For the next 48 hours, patients must stay within close proximity to a healthcare facility or where they can call 911. To ensure this product is right for you, always read and follow the label. Please consult the Consumer Information leaflet in your product package for warnings and precautions, side effects, and complete dosing and administration instructions.



Scan the code to access the EpiPen® Video Gallery, including a video on how to use EpiPen®



© 2022 Pfizer Canada ULC, Kirkland, Quebec H9J 2M5 • Toll free: 1-877-EPIPEN1 (1-877-374-7361)
EpiPen® and EpiPen Jr® are registered trademarks of Mylan, Inc. licensed exclusively to its wholly-owned affiliate, Mylan Specialty, L.P.; sub-licensee, Pfizer Canada ULC, Kirkland, Quebec H9J 2M5
PP-EPI-CAN-0384-EN



MEMBER OF
INNOVATIVE
MEDICINES
CANADA

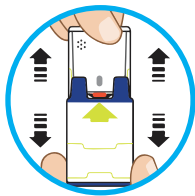


Trusted for over 35 years.

Listen up! **Allerject**[®] is now available

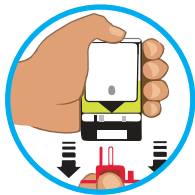
Epinephrine Injection, USP

ALLERJECT[®] is a portable epinephrine auto-injector with built-in voice assistance, designed to be easy to use in an allergic emergency



STEP 1 | Pull ALLERJECT from the outer case.

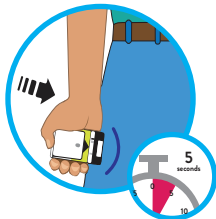
Do not go to step 2 until you're ready to use ALLERJECT. If you're not ready to use it, put it back in the outer case.



STEP 2 | Pull off the red safety guard.

The safety guard is meant to be tight. *Pull firmly to remove.*

To reduce the risk of accidentally injecting yourself, do not touch the black base of the auto-injector (where the needle comes out). If an accidental injection happens, seek immediate medical attention.



STEP 3 | Place the black end against the middle of the outer thigh (through clothing if necessary), then press firmly and hold in place for 5 seconds.

Only inject into the middle of the outer thigh (upper leg). Do not inject into any other location.

If you're administering ALLERJECT to a young child, hold the leg firmly in place while administering the injection.

ALLERJECT makes a distinct "click and hiss" sound when you press it against your leg. This is normal and means that ALLERJECT is working correctly.



STEP 4 | Seek immediate medical or hospital care.

Replace the outer case and take your used ALLERJECT with you to your doctor or pharmacist for proper disposal and replacement.

ALLERJECT is available in 2 doses



ALLERJECT 0.15 mg
For children 15 kg to 30 kg

ALLERJECT 0.3 mg
For anyone 30 kg or more

Talk to your doctor or pharmacist to discuss treatment options for anaphylaxis and whether ALLERJECT is right for you. Always read and follow the patient information leaflet that comes with your ALLERJECT device for warnings and precautions, side effects, and complete dosing and administration information.

[Learn more at Allerject.ca](http://Allerject.ca)

Safety information

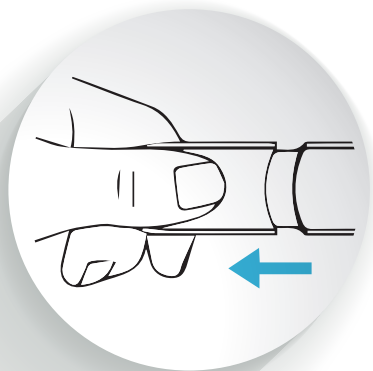
ALLERJECT is for the emergency treatment of serious allergic reactions (anaphylaxis) and is intended for people who are at risk and for people with a history of serious allergic reactions (anaphylaxis).

ALLERJECT should be used immediately to treat yourself or your child when experiencing a severe allergic reaction. This is emergency treatment. It does not replace seeing a doctor or going to the hospital. After injection, seek immediate medical attention. Even if you have sought medical help, you must stay within close proximity to a hospital or where you can easily call 911 for the next 48 hours.

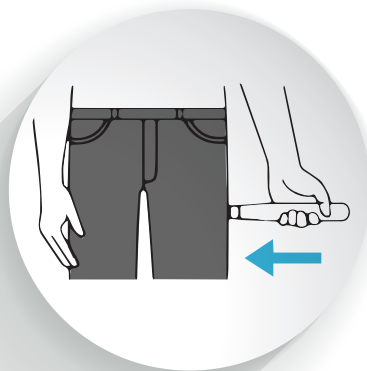
NOW AVAILABLE

How to use Emerade™

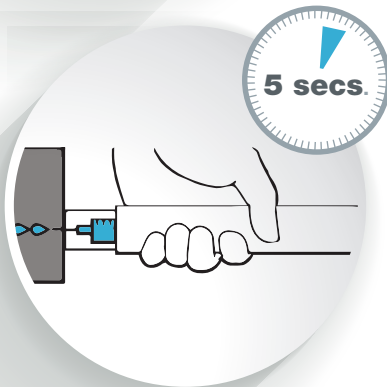
To view our instructional video go to emerade.ca



STEP 1
Remove needle shield.



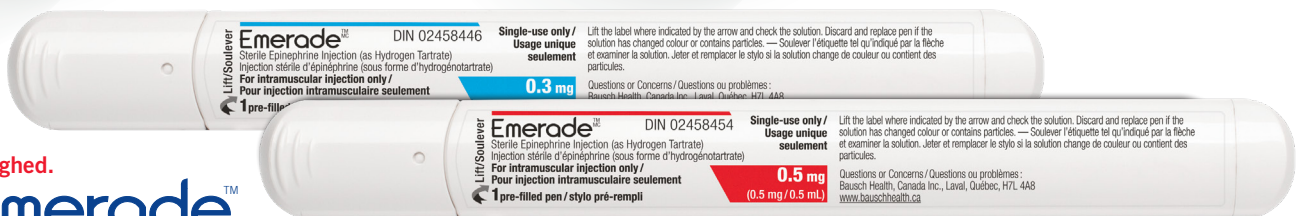
STEP 2
Press tip against outer thigh until a "click" can be heard.



STEP 3
Hold for 5 seconds.

**Call 911
right away**

STEP 4
Ask for an ambulance. Say "a sudden and severe allergic reaction".



Get Weighed.
Get **Emerade™**

Indications and clinical use: Emerade™ is indicated for the emergency treatment of serious allergic reactions (anaphylaxis) in people who are determined to be at increased risk for anaphylaxis, including people with a history of serious allergic reactions (anaphylaxis). Emerade™ should be used right away when you or your child is having a severe allergic reaction. This is emergency treatment. Using it does not replace seeing a doctor or going to the hospital. You must get medical help right away after you or your child has used it. To ensure Emerade™ is right for you, speak to your healthcare professional and always read and follow the information leaflet in your product package.

For complete dosing and instructions for use, please refer to the Patient Medication information in the Emerade™ Product monograph.